

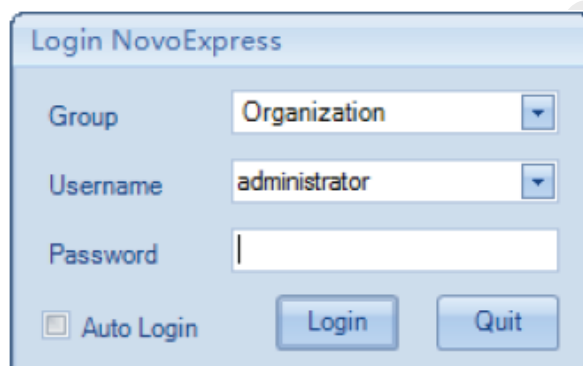
NovoCyte Advanteon BVR Standard Operation Protocol

Basic Operation

1. NovoExpress Software Log In

Log into NovoExpress software with your own login name and password. Make sure *Auto Login* is unchecked.

**Please contact Faculty Core Facility Staff to establish a new user account.*

The image shows a 'Login NovoExpress' dialog box. It has a light blue background and a title bar. Inside, there are three labels: 'Group', 'Username', and 'Password'. The 'Group' label is next to a dropdown menu showing 'Organization'. The 'Username' label is next to a dropdown menu showing 'administrator'. The 'Password' label is next to an empty text input field. Below these fields, there is a checkbox labeled 'Auto Login' which is unchecked. To the right of the checkbox are two buttons: 'Login' and 'Quit'.

*Username *Ocleaning* do not have password. Leave password entry box empty and click *Login*.

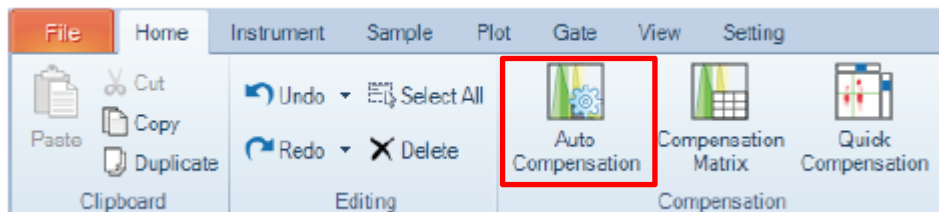
Ocleaning account is for cleaning purpose only, **DO NOT USE THIS ACCOUNT TO PERFORM EXPERIMENT.**

2. Compensation (Perform when needed)

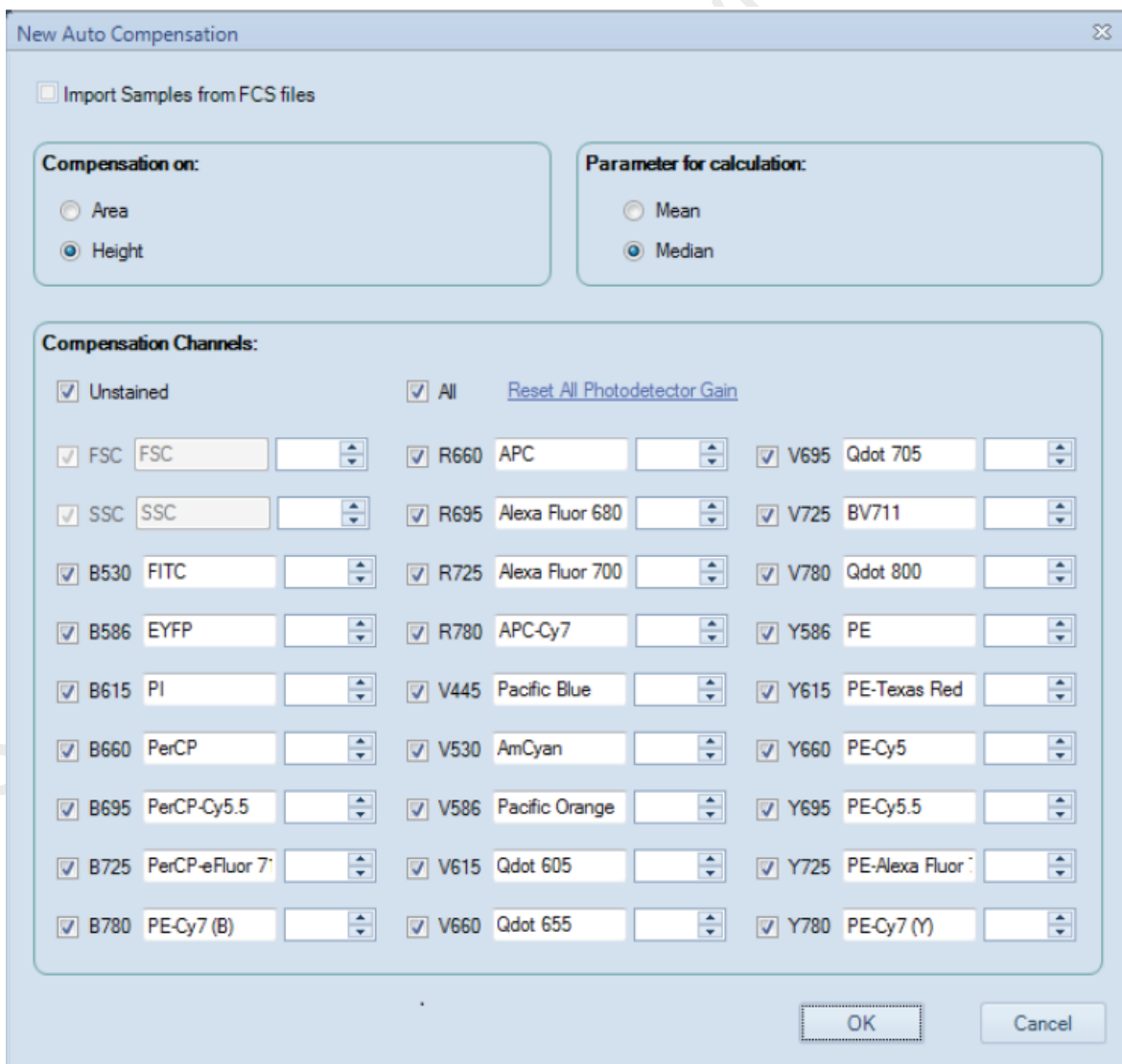
Step 1. Select appropriate **plate type** in the *Plate Manager*.

Step 2. Set-up Compensation Controls

a. In the *Home* tab of the **Menu Bar**, click the *Auto Compensation* button.

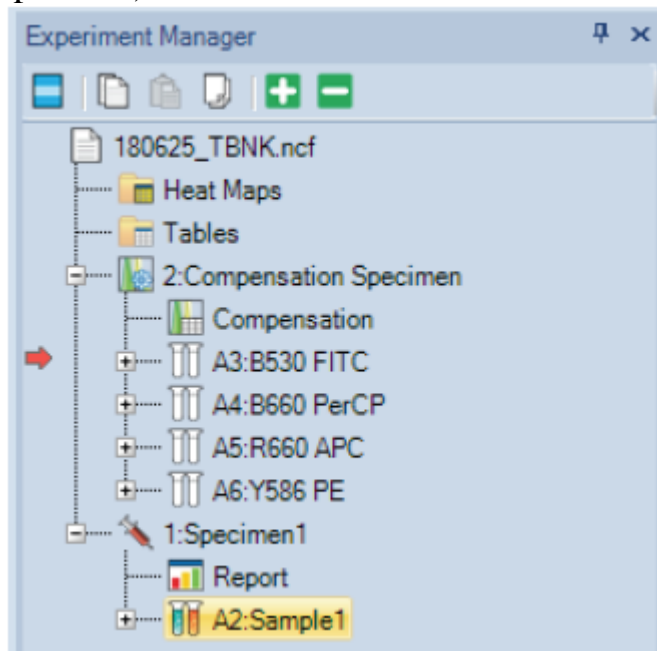


b. Select Compensation on: *Height*, Parameter for calculation: *Median* and **check the boxes of channels involved**. Then click **OK**



- c. Compensation Control Specimen is created in the Experiment Manager panel with corresponding empty control samples of specific position of the tube rack or plates (e.g. A3: B530 FITC, A3 is the position of the rack or plate and refers to FITC single stain controls).

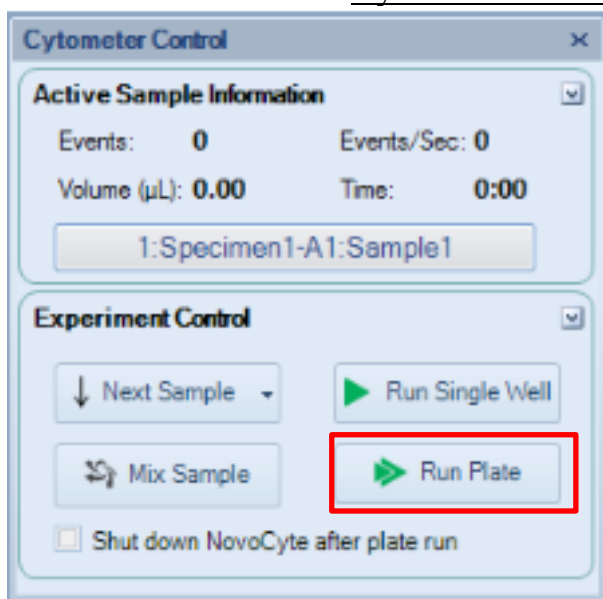
The compensation controls tubes should be placed in the rack or plate according to the positions given (i.e. Put FITC single stain tubes in A3 position).



You may change the position by right-click of the sample name and *Rename* the control (e.g. A3: B530 FITC can be renamed to B3: B530 FITC, FITC single stain tube position now changes from A3 to B3).

Step 3. Compensation Control Acquisition

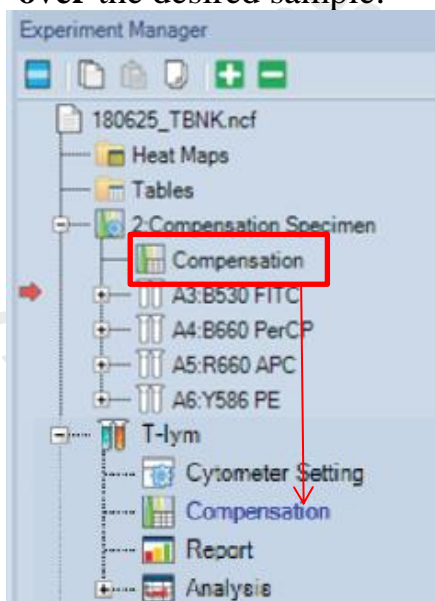
- a. Click **Run Plate** on the Cytometer Control Panel.



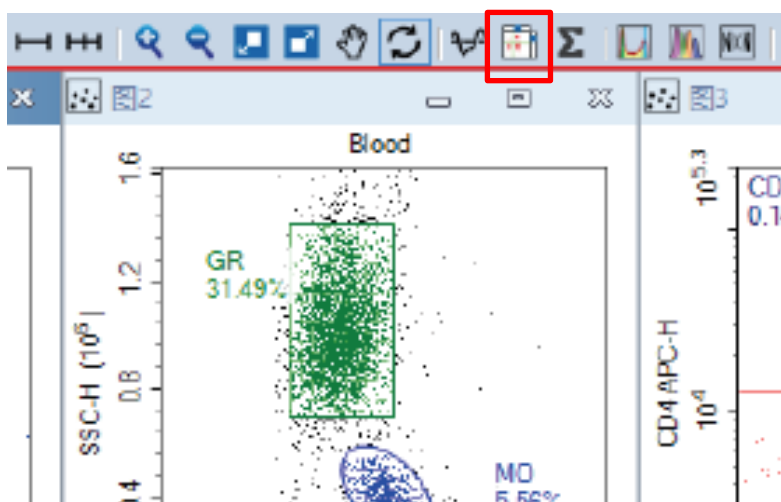
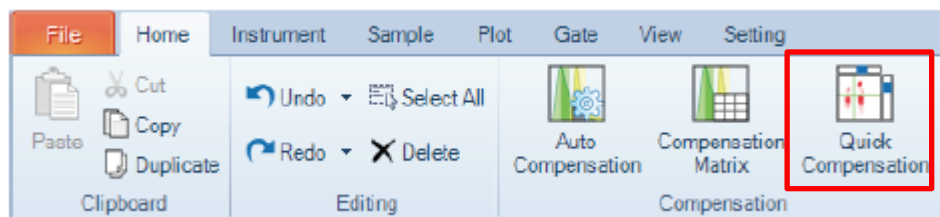
- b. Select wells of compensation controls. Click **Run** and then **OK** to proceed.
- c. After all controls have been acquired, the compensation matrix is calculated automatically.

Step 4. Apply Compensation Matrix to Experiment Sample

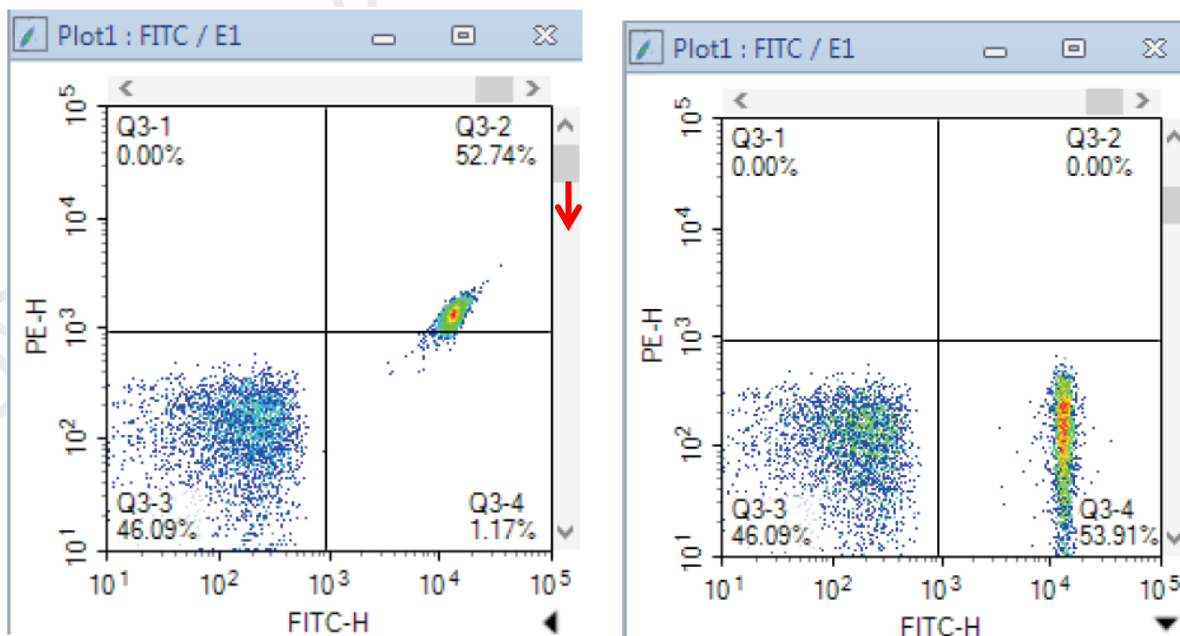
- a. **Drag** the *Compensation* node under the *Compensation Specimen* and **Drop** over the desired sample.



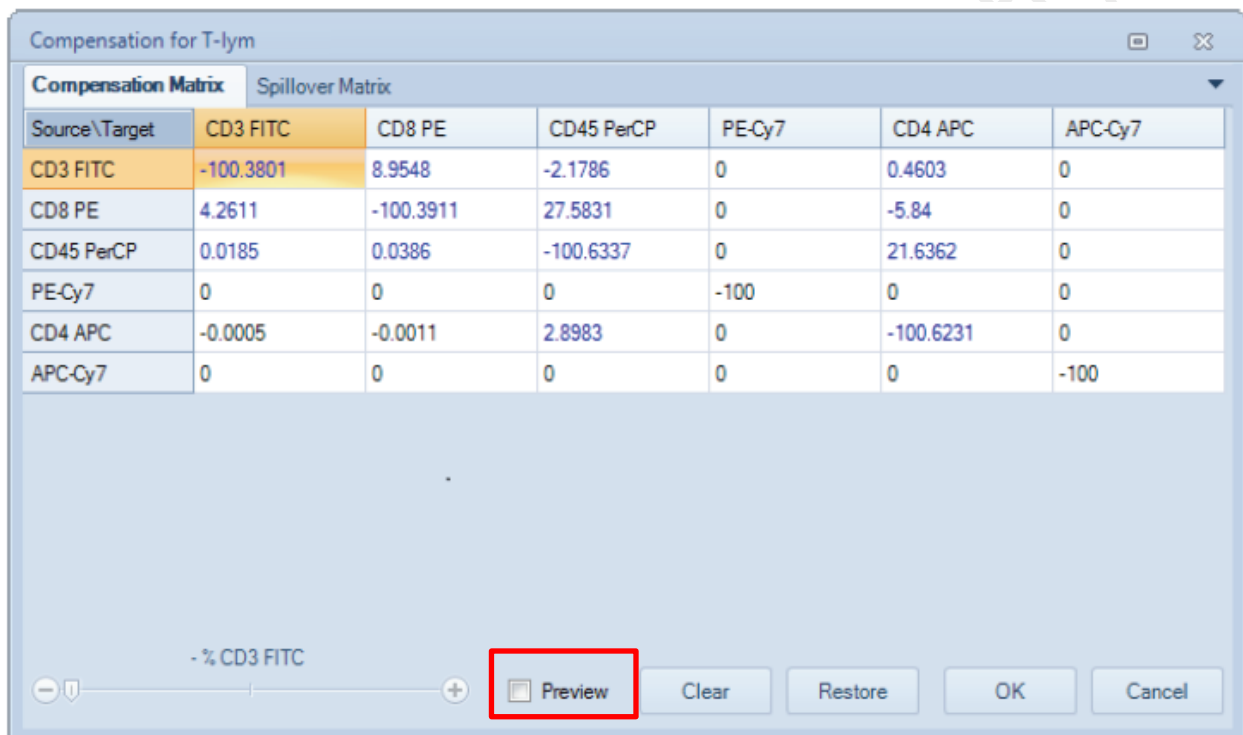
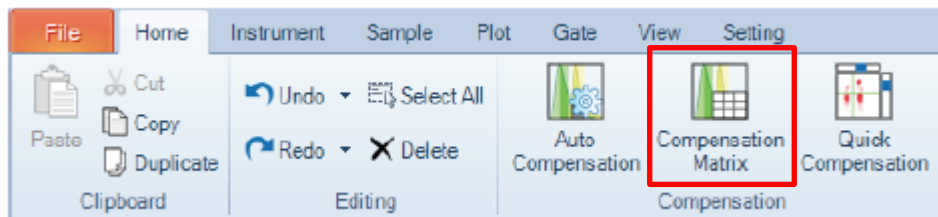
- b. To fine tune the Compensation, click on the plot you want to adjust and click the **Quick Compensation** button In the **Home** tab of the Menu Bar **OR** the **quick compensation icon** in the tool bar.



Scrollbars appear on any two parameters plots with fluorescent parameters opened on the workspace. Quickly adjust compensation by **dragging the scrollbar**.



- c. To view or adjust the compensation matrix, lick the **Compensation Matrix** button In the **Home** tab of the Menu Bar and the Compensation Matrix window will show.



To adjust, **check Preview** box and adjust the corresponding value. The corresponding plots will refresh with updated value real time. Adjust until satisfied. Then click **OK** to apply.

Click **Restore** to restore the Auto-compensation matrix value.

3. Sample acquisition with NovoSampler Q

Step 1. Create experiment samples from the Plate Manager

- a. Select appropriate Plate type. Choose **40-tube rack** for 5-mL flow tubes

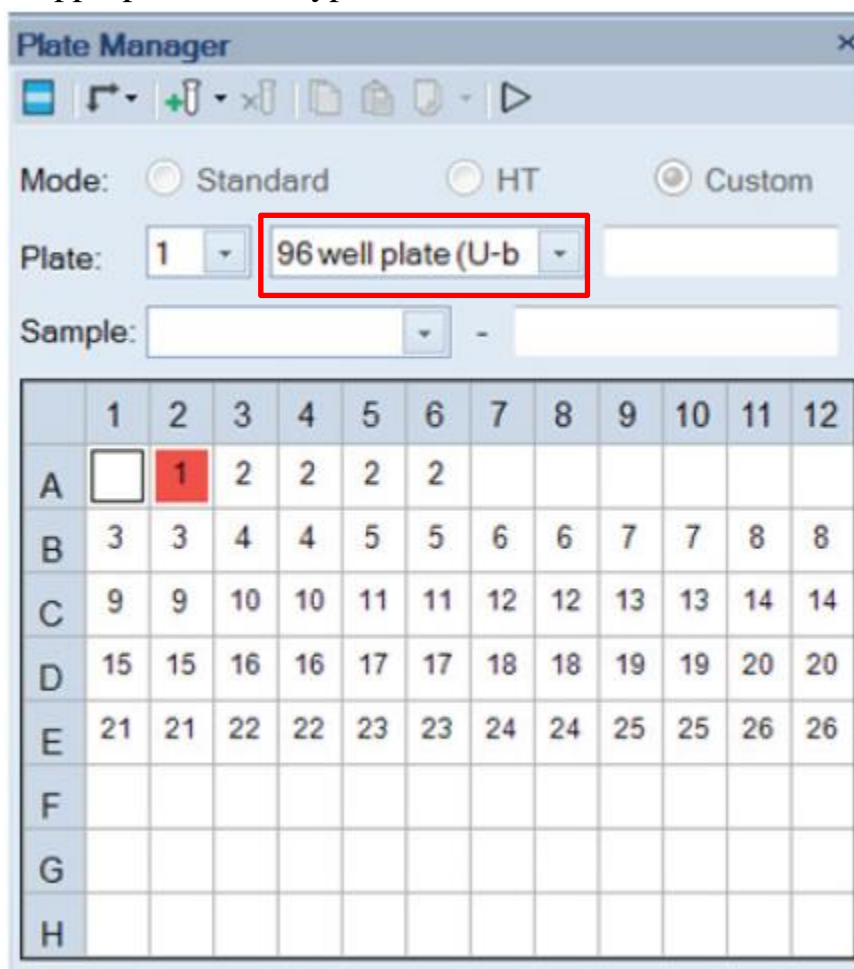


Plate Manager

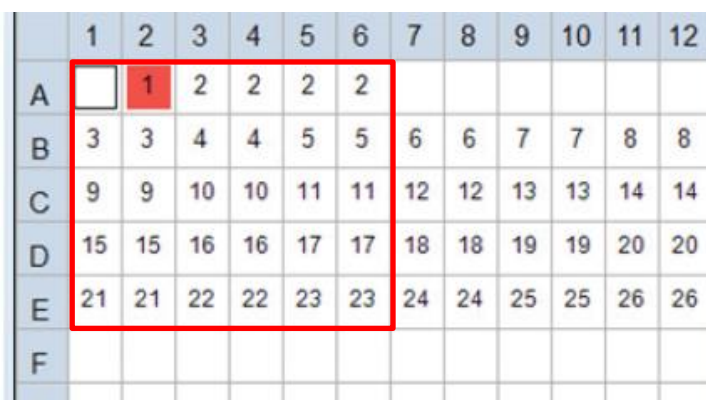
Mode: ☐ Standard ☐ HT ☒ Custom

Plate: 1 96 well plate (U-b)

Sample: -

	1	2	3	4	5	6	7	8	9	10	11	12
A		1	2	2	2	2						
B	3	3	4	4	5	5	6	6	7	7	8	8
C	9	9	10	10	11	11	12	12	13	13	14	14
D	15	15	16	16	17	17	18	18	19	19	20	20
E	21	21	22	22	23	23	24	24	25	25	26	26
F												
G												
H												

- b. Highlight the position with samples on the plate by holding left Click and Drag AND/OR hold Ctrl and left-click to multi-select specific wells. Black square indicates selected well.



	1	2	3	4	5	6	7	8	9	10	11	12
A		1	2	2	2	2						
B	3	3	4	4	5	5	6	6	7	7	8	8
C	9	9	10	10	11	11	12	12	13	13	14	14
D	15	15	16	16	17	17	18	18	19	19	20	20
E	21	21	22	22	23	23	24	24	25	25	26	26
F												

- c. Click the **New Sample(s)** button to create a new sample of *Specimen 1*.

Plate Manager

Mode: ☐ Standard ☐ HT ☒ Custom

Plate: 96 well plate (U-b)

Sample: -

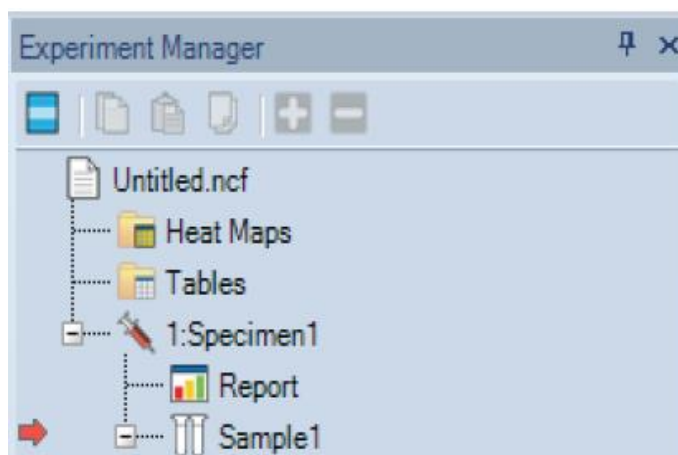
	1	2	3	4	5	6	7	8	9	10	11	12
A		1	2	2	2	2						
B	3	3	4	4	5	5	6	6	7	7	8	8
C	9	9	10	10	11	11	12	12	13	13	14	14
D	15	15	16	16	17	17	18	18	19	19	20	20
E	21	21	22	22	23	23	24	24	25	25	26	26
F												
G												
H												

- d. Repeat step *1b* and *1c* to create new sample of *Specimen 2* if needed.

- e. Check *Absolute count* if absolute counting is required.

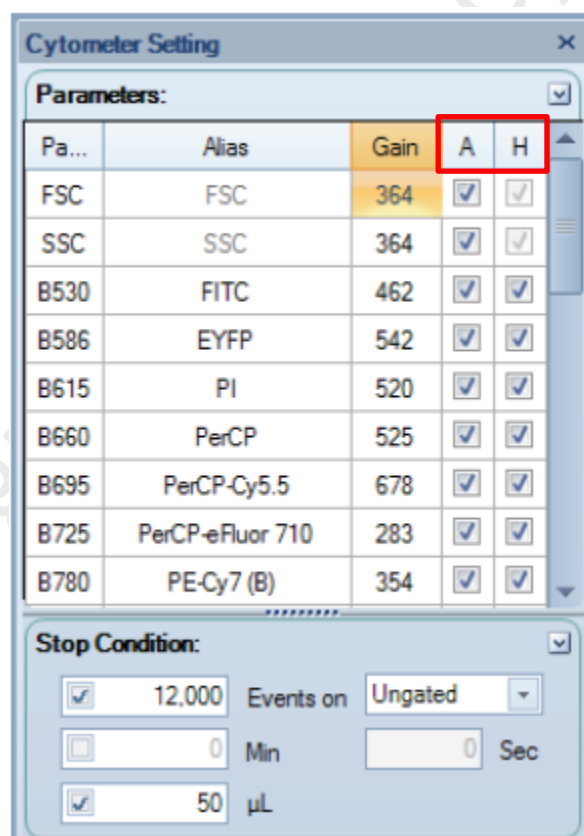
*Dead volume will increase from 10 μ L to 30 μ L with Absolute count checked.

- f. Double click *Sample 1* on the Experiment Manager until the red arrow is pointing to Sample 1.

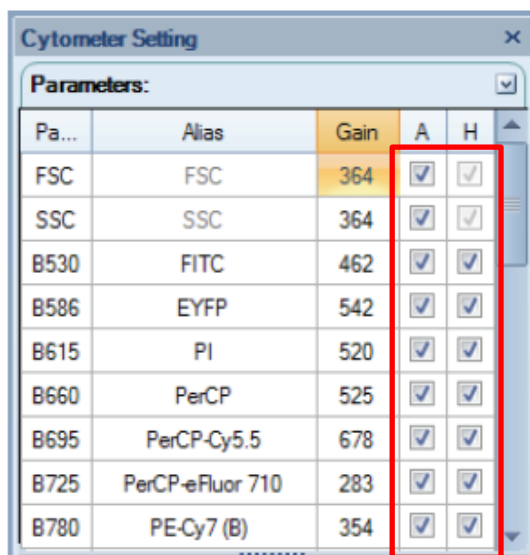


Step 2. Select Channels

- a. Click on the “A” and “H” of the parameters panel in Cytometer setting to Select OR Unselect ALL.



- b. **Check the box of A or H** of the interested channels to select. Please always check A for FSC (H is checked by default).



Step 3. Conditions Setup

- Set up the data recording stop conditions by **checking the box next to the condition** *Events* and/or *Time* and/or *Volume*. Acquisition will stop when ANY one of the selected condition(s) is fulfilled.

*Volume is compulsorily selected.

Stop Condition:

☒ 10,000 Events on Ungated *Events*

☐ 0 Min Sec *Time*

☒ 10 µL *Volume*

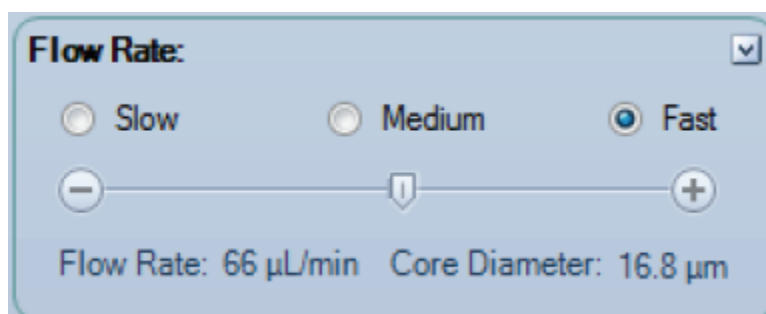
Range of each conditions:

Events	1 – 10,000,000
Time	0-60 min; 0-59 Sec
Volume	5 – 5000 µL

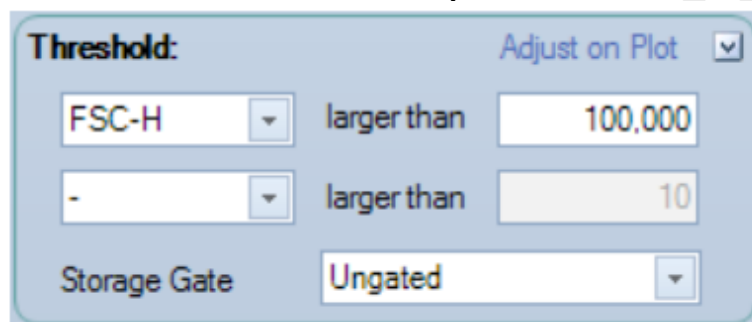
* Volume may be limited to the Plate format. Please refer to the Appendix.

- Select flow rate by click the radio button of *Slow* (14 µL/min), *Medium* (35 µL/min), and *Fast* (66 µL/min) OR use the slider to adjust the flow rate from 5 ~120 µL/min.

* Current sample's flow rate and the corresponding core diameter are shown in the bottom of the panel.



- c. Set the appropriate threshold by select the appropriate parameters and type in the appropriate number on the *Threshold* panel.

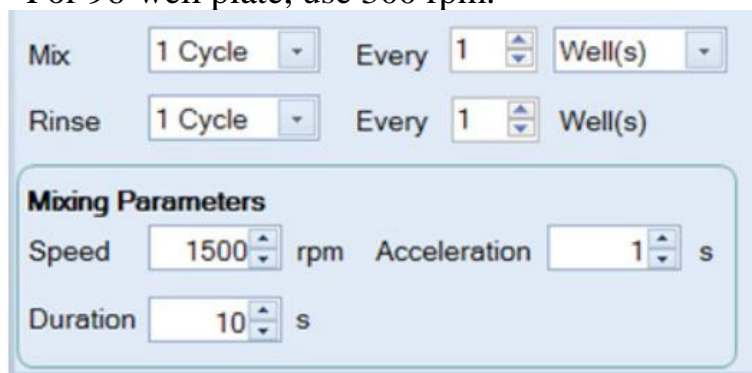


Suggested Threshold on Different cell type:

Cell Types	FSC-H Threshold
Cell lines, larger than 20 µm in cell diameter	300,000~1,000,000
Cells lines, smaller than 20 µm in cell diameter	100,000~300,000
Fixed or un-fixed, freshly isolated cells (leukocytes, spleen cells, thymocytes)	50,000~200,000
Platelets	5,000~10,000
Bacteria	1,000~10,000

d. Setup mixing and rinsing conditions under Plate Manager.

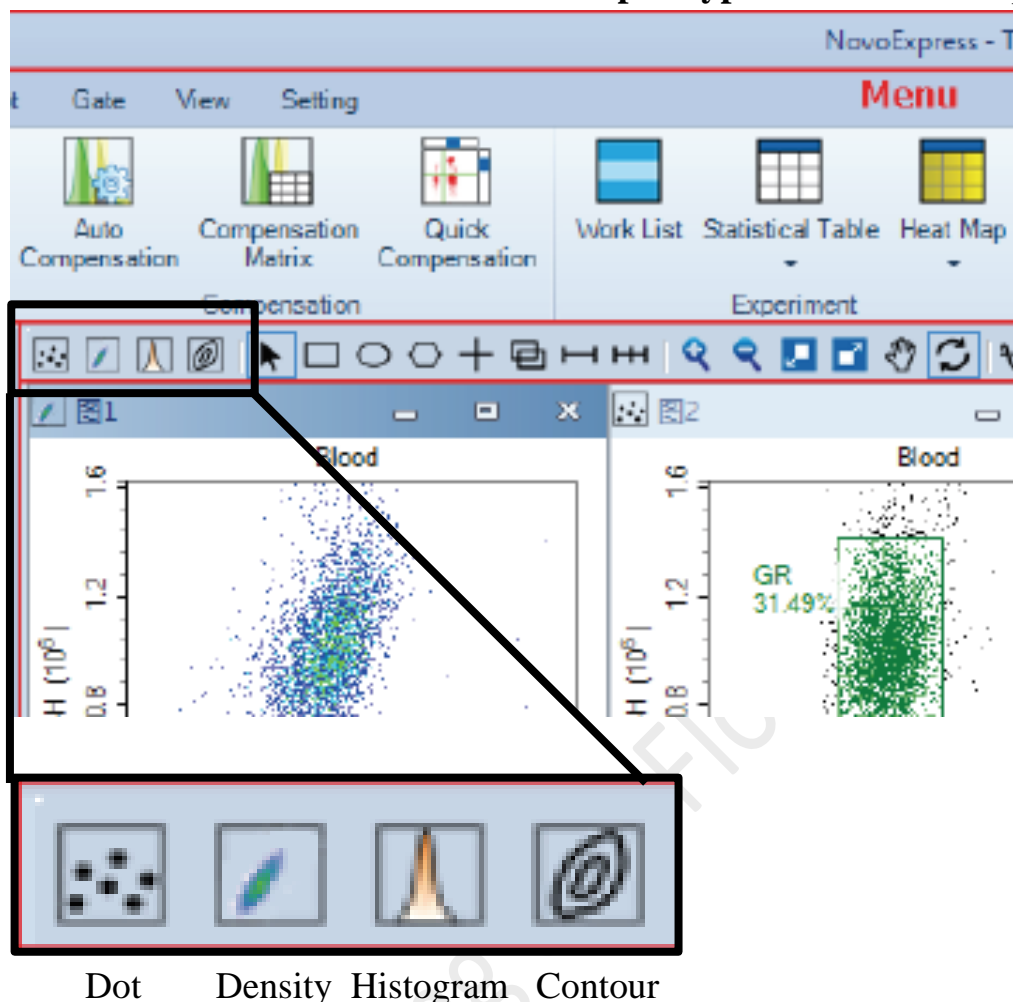
*For 96-well plate, use 300 rpm.



The screenshot displays the 'Plate Manager' configuration window. At the top, there are two rows of controls: 'Mix' and 'Rinse'. Each row has a dropdown menu set to '1 Cycle', a numeric spinner set to '1', and a dropdown menu set to 'Well(s)'. Below these is a section titled 'Mixing Parameters' enclosed in a rounded rectangle. Inside this section, there are three controls: 'Speed' with a numeric spinner set to '1500' and the unit 'rpm', 'Acceleration' with a numeric spinner set to '1' and the unit 's', and 'Duration' with a numeric spinner set to '10' and the unit 's'. A large, light gray diagonal watermark reading 'CPoS - Imaging and Flow Cytometry Core' is visible across the entire page.

Step 4. Draw Plots

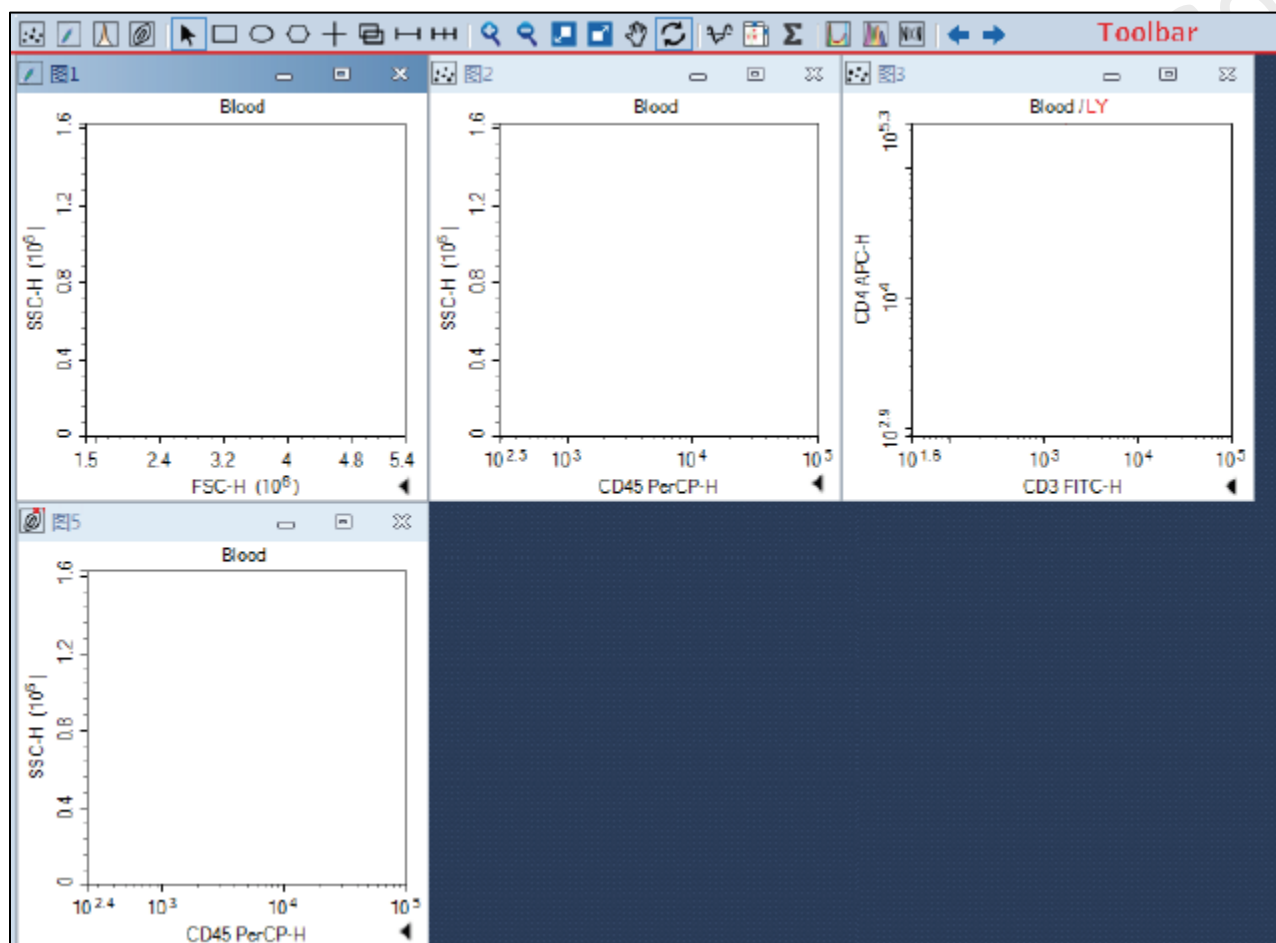
- a. Click the icon of the interested **plot type** above the workspace



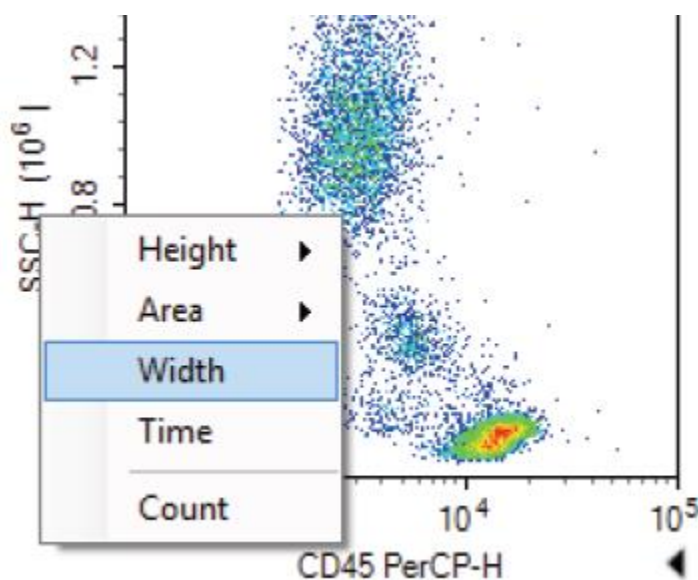
Dot Density Histogram Contour

Plot type	Number of parameters	Description
Dot plot	2	The intensities of two parameters are represented by the coordinates of an event (one dot) on the plot.
Density plot	2	The intensities of two parameters are represented by the coordinates of an event (one dot) on the plot with colour-coded density display.
Contour plot	2	The intensities of two parameters are represented by the coordinates on the plot with contour line to show density.
Histogram plot	1 (x axis only)	The intensity of a parameter is represented along the x-axis, and the number of events at each intensity value is represented along the y-axis.

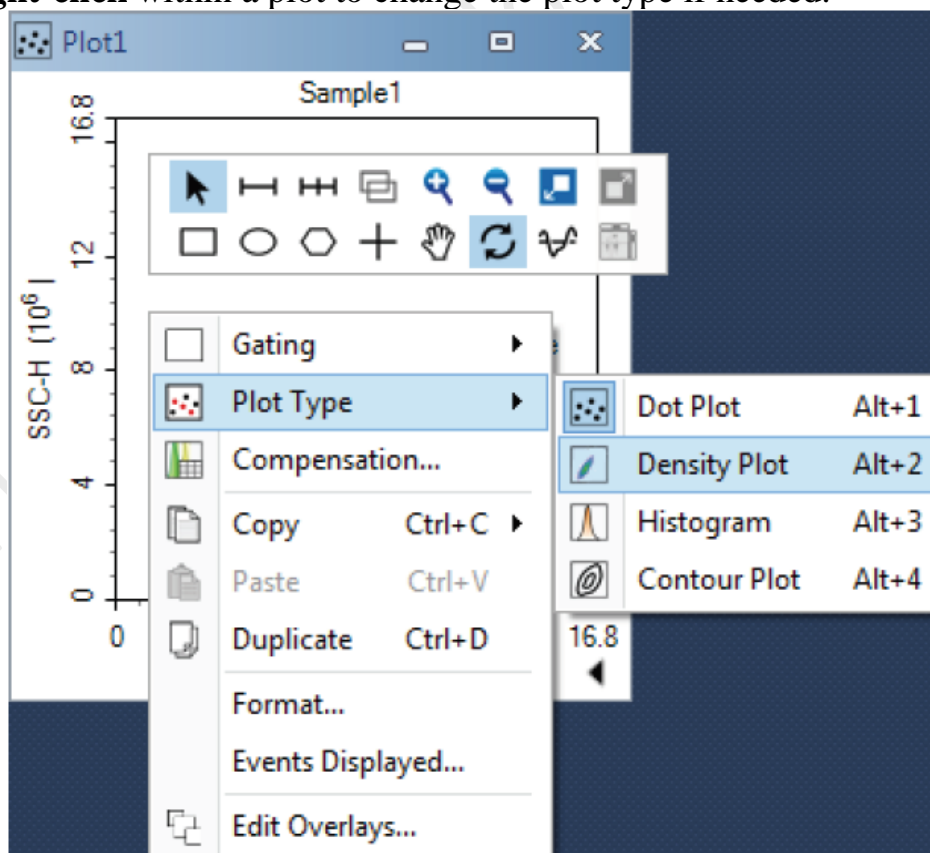
- b. Create the following plots with the following sequence.
- FSC-H VS SSC-H (Mother population of interest) >
 - FSC-H VS FSC-A (Single Cell Gate) >
 - Live-Dead VS SSC-A (if applicable) >
 - Fluorescence Plots (if applicable)



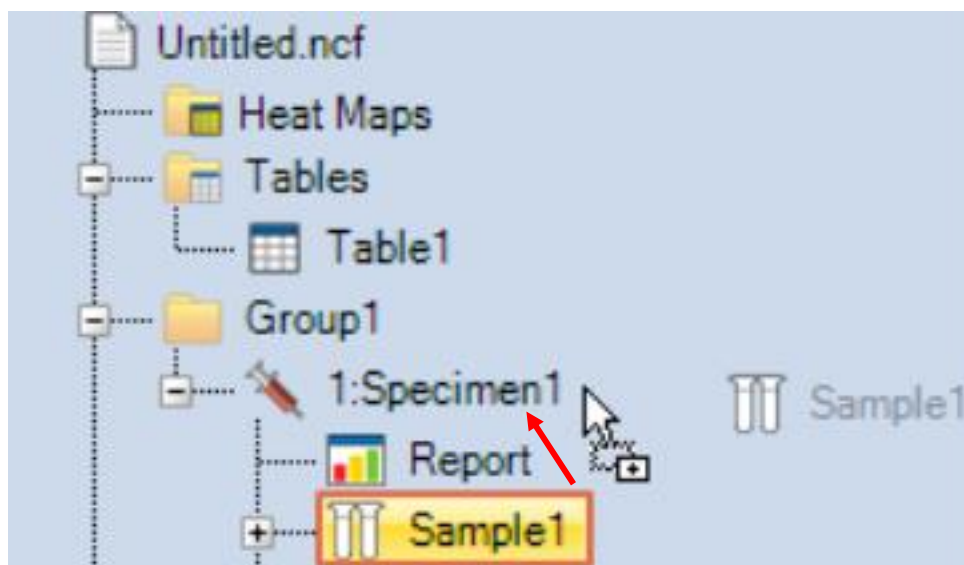
- c. To change the parameters of a plot, **mouse over the axis label** and **right-click** to open the drop-down menu of parameters list. Select the parameter of interest.



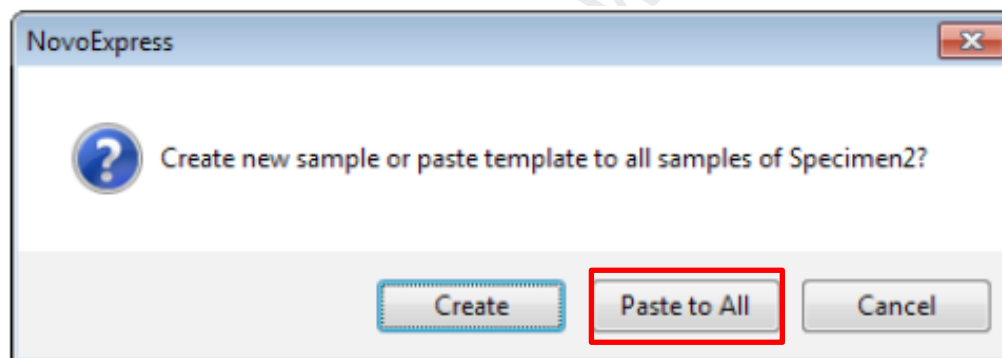
- d. **Right-click** within a plot to change the plot type if needed.



- e. To copy all the settings and plots to other samples in Specimen 1, **drag *Sample 1* and drop over *Specimen 1*** on the Experiment Manager.

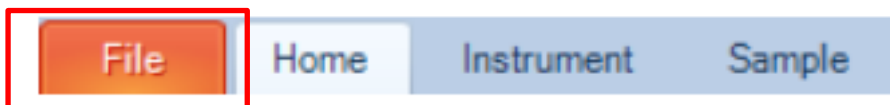


- f. Click *Paste to All*.

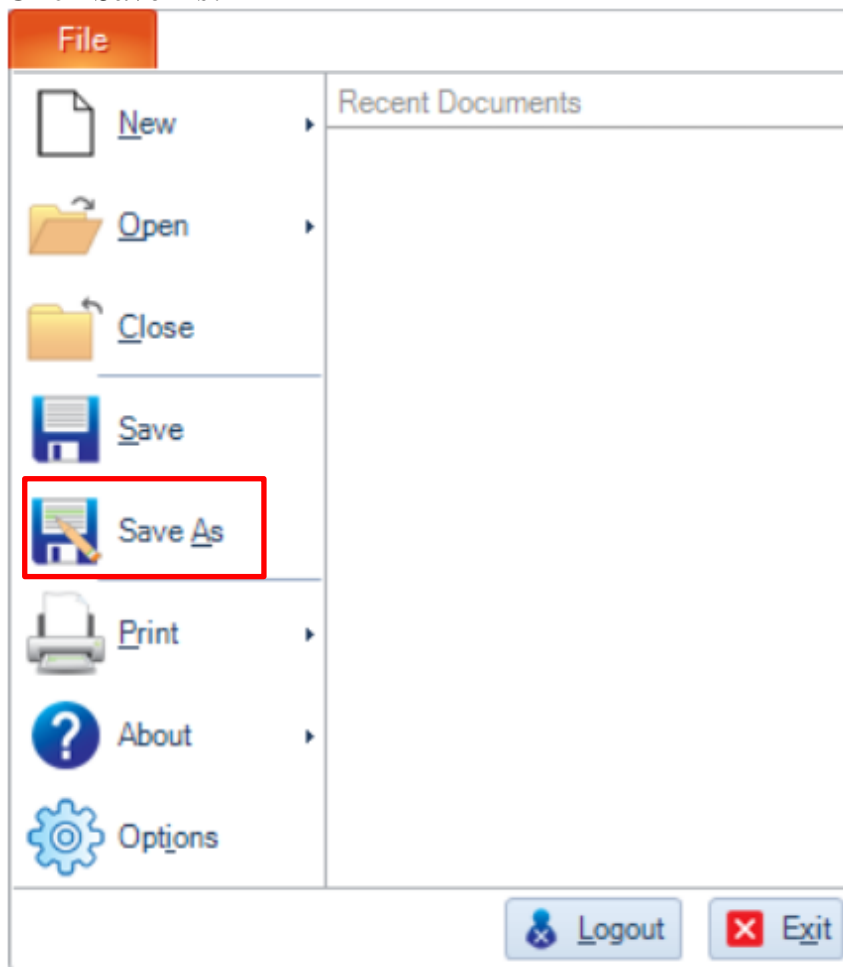


Step 5. Save Experiment

- a. Click **File** on the Menu bar.



- b. Click *Save As*.



- c. Save the experiment (.ncf) in the folder below.

Computer> Experiment Data (D:)> User> Department> YOUR FOLDER

Click *Save*.

Step 6. Load tube rack/ plate

- a. Lift the cover of the NovoSampler Q.



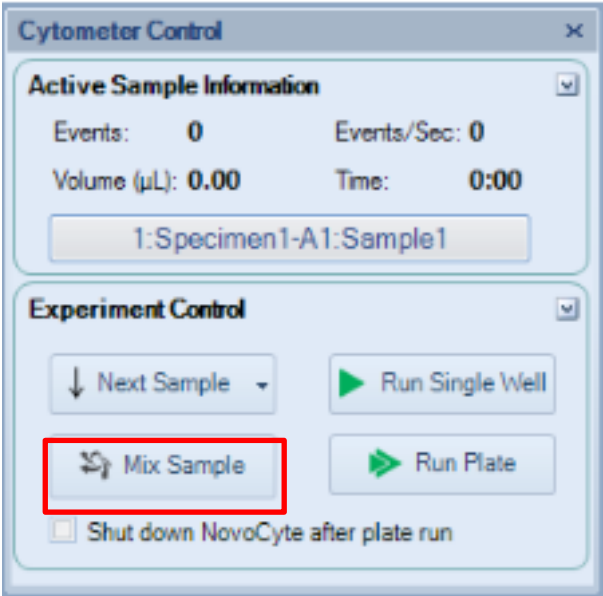
- b. Place the tube rack with your sample tubes or plate on the orbital Shaker with A1 position on the top left-hand corner. Make sure the rack or plate is placed within the 4 metal poles.



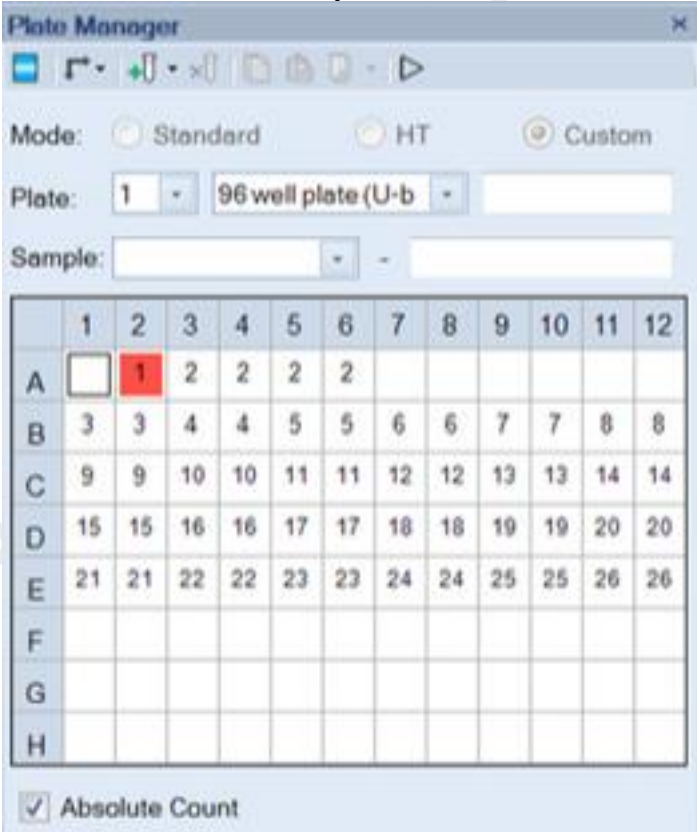
- c. Put down the cover.

Step 7. Sample Acquisition

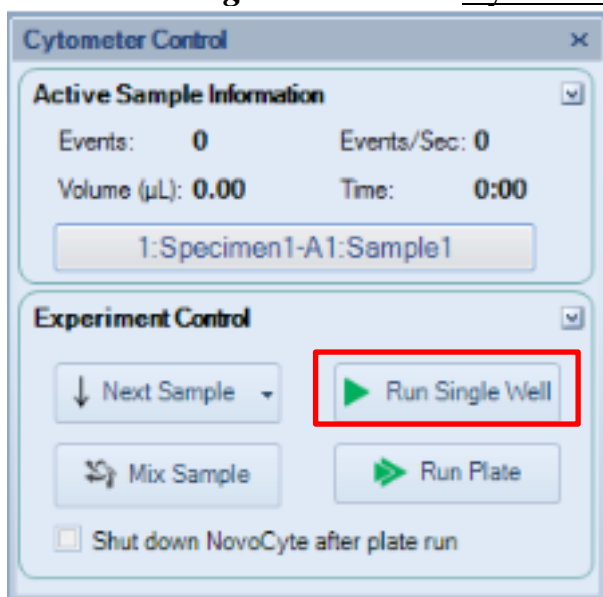
- a. Click **Mix Sample** to perform orbital shaking.



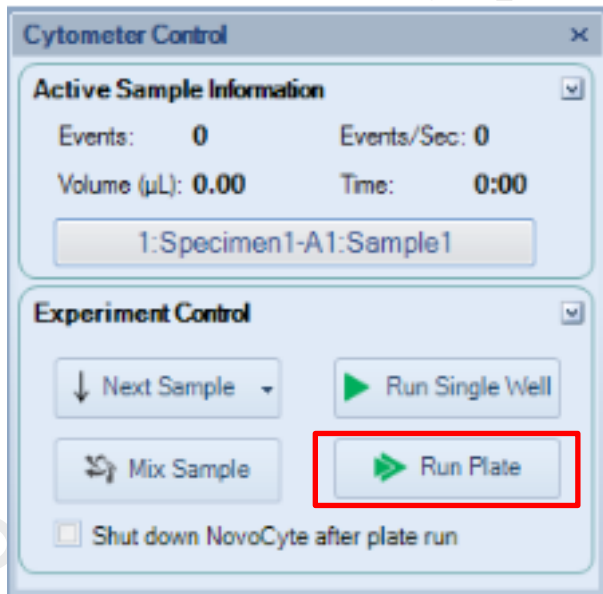
- b. To run **SINGLE well/ tube**, **double-click** on the interested well on Plate Manager and the selected position highlight in red.
*A2 is selected in the picture.



- c. Click **Run Single Well** on the Cytometer Control Panel.



- d. To run multiple tubes / wells automatically, click **Run Plate** on the Cytometer Control Panel.



- e. Double check if the plate type is correct as it state. Click **Run** to continue, or else click **Cancel** and correct the plate type in Plate Manager panel.

f. **Select the tubes or wells** you would like to be acquired on the Plate View.
Selected wells highlight in Blue. Then click **Run**.

Select well(s) to run

Plate 1 ☐ Show Specimen Name ☐ Display sample has data Print

	1	2	3	4	5	6	7	8	9	10	11	12
A			Compensat...	Compensat...	Compensat...	Compensat...						
B	Wells1-Su...	Wells1-Su...	Wells2-Su...	Wells2-Su...	Wells3-Su...	Wells3-Su...	Wells4-Su...	Wells4-Su...	Wells5-Su...	Wells5-Su...	Wells6-Su...	Wells6-Su...
C	Wells7-Su...	Wells7-Su...	Wells8-Su...	Wells8-Su...	Wells9-Su...	Wells9-Su...	Wells10-Sa...	Wells10-Sa...	Wells11-Sa...	Wells11-Sa...	Wells12-Sa...	Wells12-Sa...
D	Wells13-Sa...	Wells13-Sa...	Wells14-Sa...	Wells14-Sa...	Wells15-Sa...	Wells15-Sa...	Wells16-Sa...	Wells16-Sa...	Wells17-Sa...	Wells17-Sa...	Wells18-Sa...	Wells18-Sa...
E	Wells19-Sa...	Wells19-Sa...	Wells20-Sa...	Wells20-Sa...	Wells21-Sa...	Wells21-Sa...	Wells22-Sa...	Wells22-Sa...	Wells23-Sa...	Wells23-Sa...	Wells24-Sa...	Wells24-Sa...
F												
G												
H												

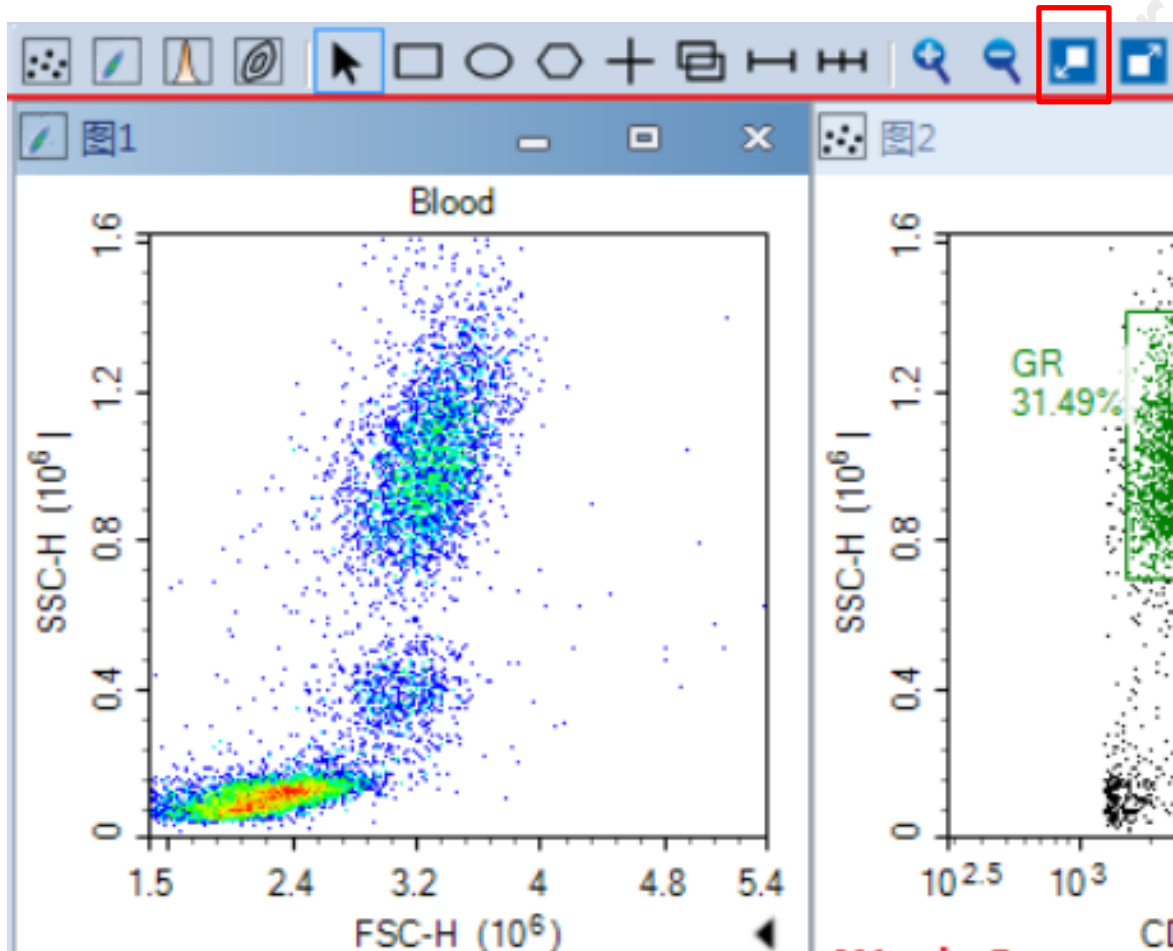
Run Cancel

g. Click **OK** to continue.

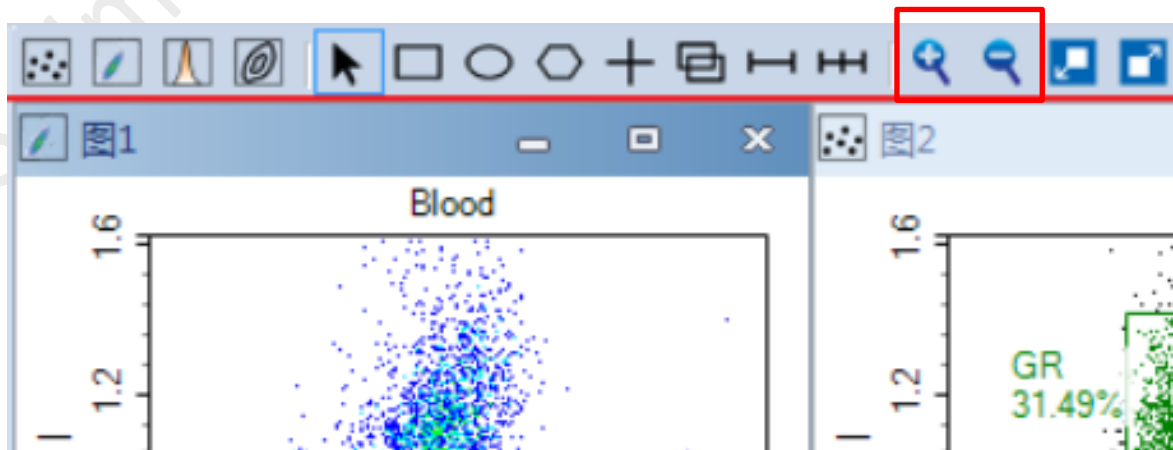
4. Data Analysis during acquisition

Step 1. Set the appropriate display range of the plot.

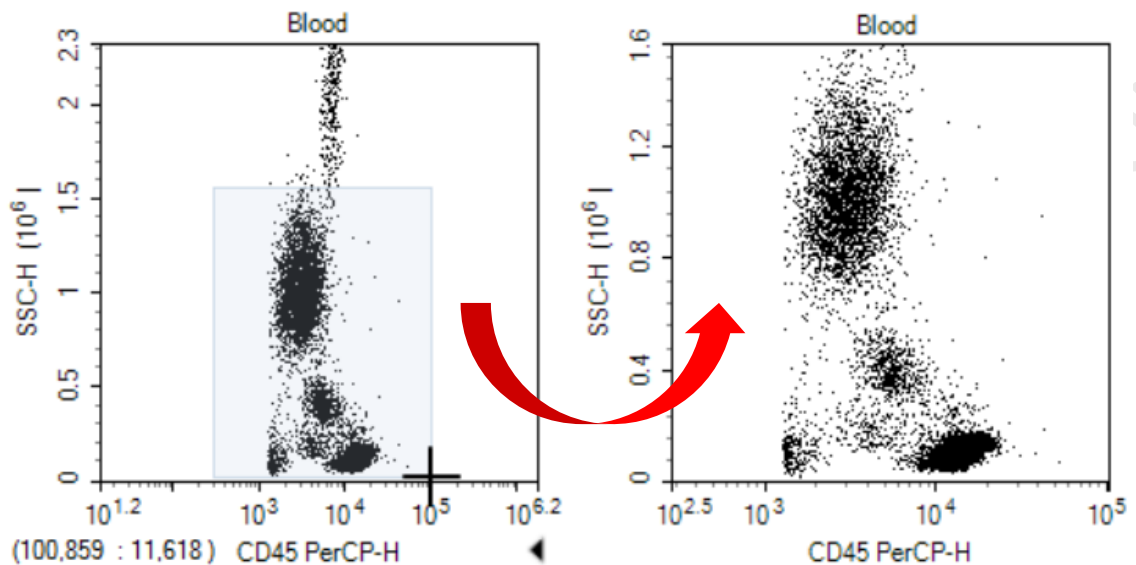
- a. Select the FSC-H Vs SSC-H plot (The colour of the header of the plot will be darker). Click ***Auto range*** button to optimize the data display range.



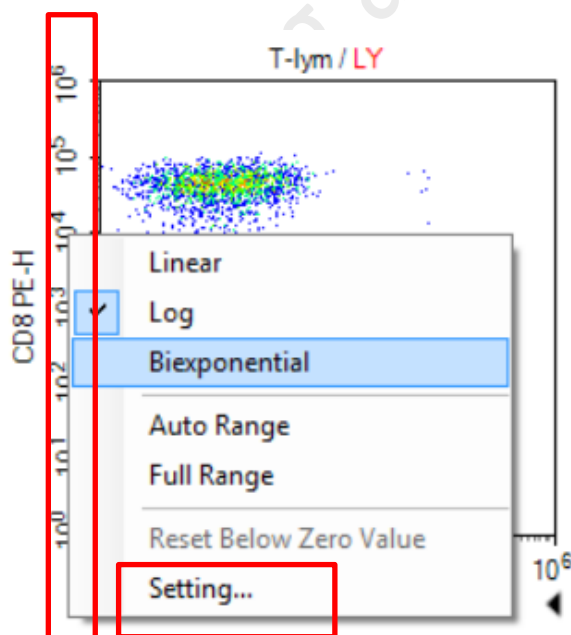
- b. To fine tune the data display range, **click zoom in / zoom out buttons.**



- c. **Drag** on the interested region on the plot if you click *zoom in*.



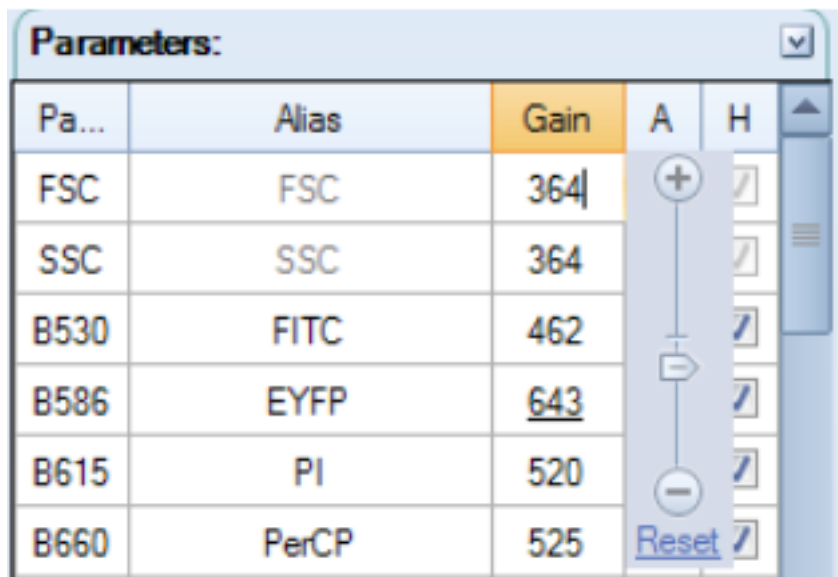
- d. **Click within a plot if you click zoom out.** The range increases by 20% of the current range. Click repeatedly until the desired range is reached.
- e. To change the scale of parameters, **right click on the coordinate label** to open and select the axis scaling (i.e. Linear, Log or Biexponential). Click **Setting** for more options.



- f. If you cannot achieve a desirable range by using the plot range tools, **adjust the Gain** of the corresponding channels in Cytometer Control - Parameters.

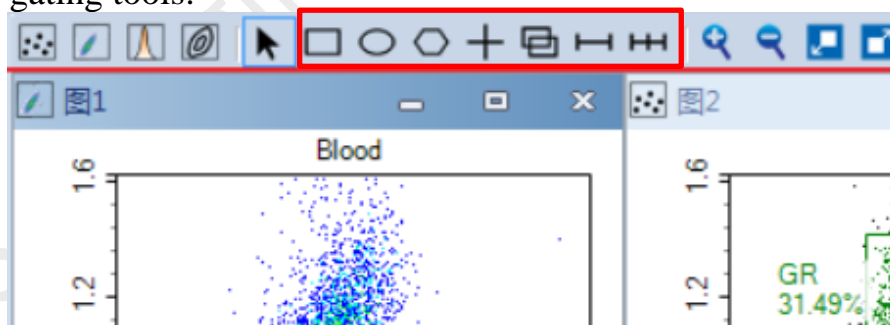
To adjust photodetector gain of one parameter, **double click the current Gain number** of the specified parameter, the photodetector gain adjustment slider will show. **Drag the slider bar or directly enter the value** to change the photodetector gain.


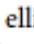
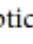
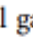
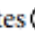

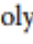
***Gain can only be adjusted during acquisition.**



Step 2. Gating

- a. Draw Gates to gate out the target population on the FSC-H VS SSC-H plot with gating tools.



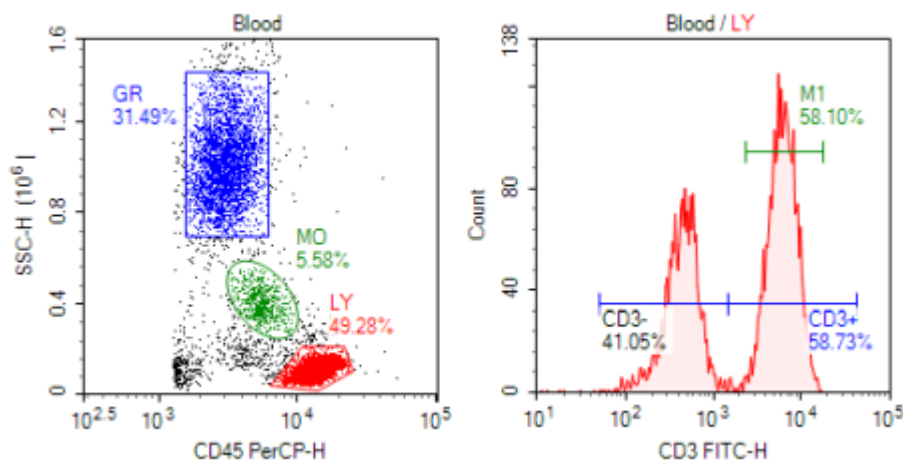
rectangular gates , elliptical gates , polygonal gates , quadrant gates , logic gates , range gates , and bi-range gates 

Dot Plot, Density Plot, Contour Plot – All gates suitable

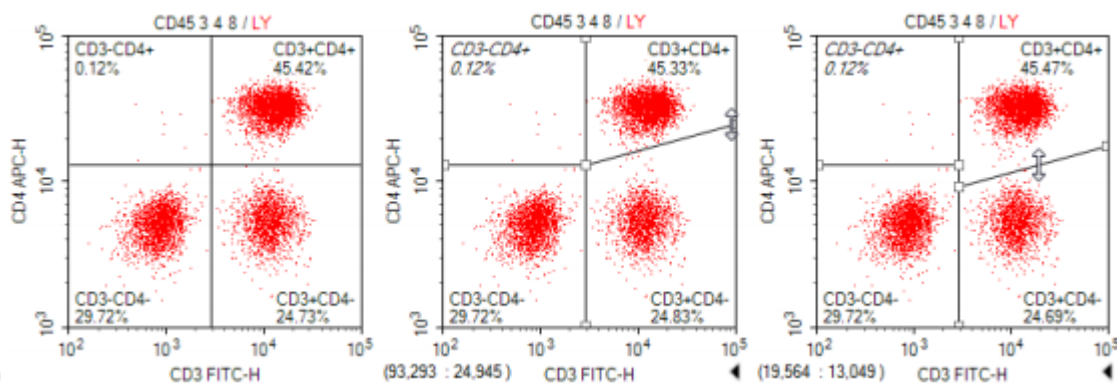
Histogram Plot – Range / Bi-range gate suitable

- b. To create *rectangular/ elliptical/ range/ bi-range gate*, click the corresponding icon and drag in the plot to enclose the target population within the shape. Release the mouse button to create the gate.

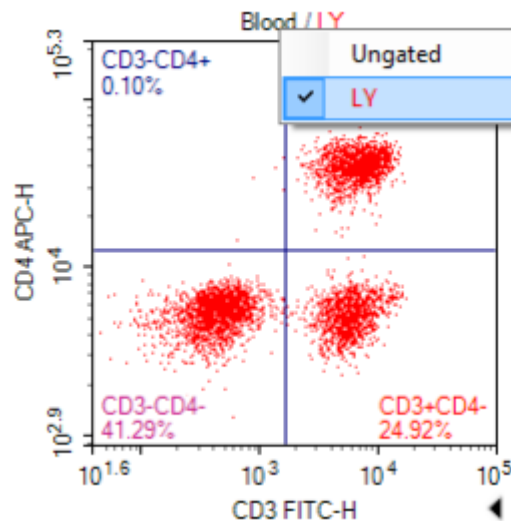
To create *polygonal gate*, click the corresponding icon and left click in the plot to create the first vertex of the polygon. Click in a new location to create the second vertex of the polygon. Continue moving around the target population and creating vertices until the target population is enclosed. On the last vertex, double-click to complete the polygon and create the gate.



To create *quadrant gate*, click the corresponding icon and Click in the plot to create the center of the quadrants and create the gate. As shown below, the center, endpoints, and lines of the quadrant gate can be moved to enclose the correct populations.



- c. To create gate subpopulation, **right-click at the plot header** of a plot to display a drop-down menu. Select the mother gate and create a new gate for your target.



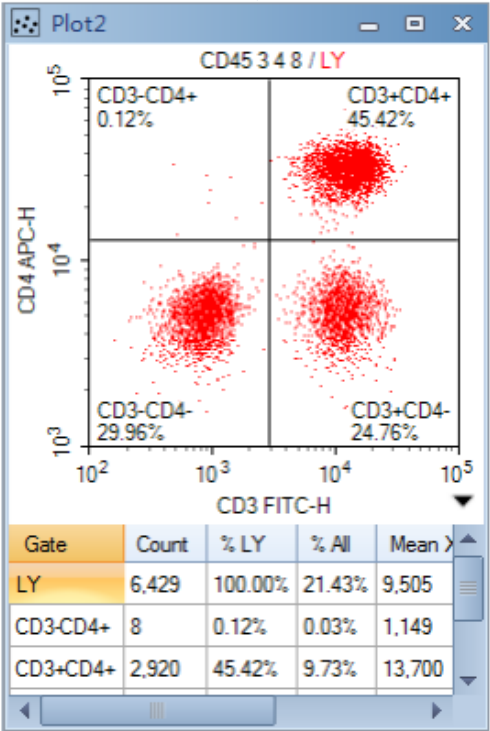
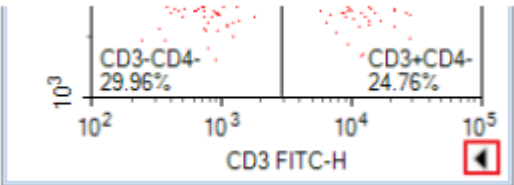
- d. The Gate Manager panel displays all gates of the active sample in list mode or tree mode. It provides user interface to modify gate name, color and color precedence and also shows gate hierarchy and gate statistics.

Gate Manager panel showing a list of gates and their statistics.

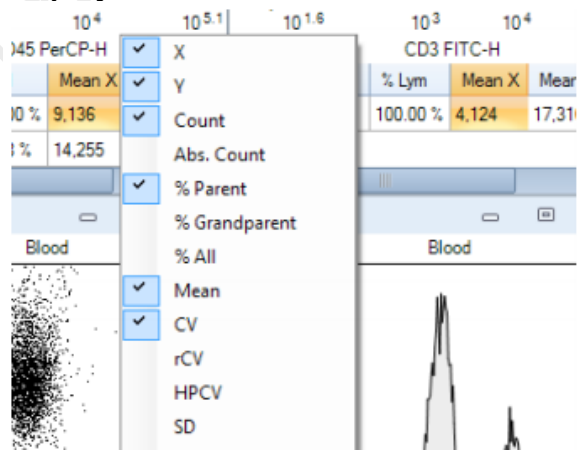
Gate	Color	Count	% Parent	X	Y	Mean X	Mean Y	CVX	CVY
All	8	10,035							
GR	3	3,160	31.49%	CD45 PerCP-H	SSC-H	3,207	1,017,885	29.33%	15.15%
MO	2	560	5.58%	CD45 PerCP-H	SSC-H	5,727	403,460	22.95%	15.38%
LY	1	4,945	49.28%	CD45 PerCP-H	SSC-H	14,276	109,626	19.14%	27.48%
CD3-CD4+	4	7	0.14%	CD3 FITC-H	CD4 APC-H	975	27,054	56.15%	48.79%
CD3+CD4+	5	1,660	33.58%	CD3 FITC-H	CD4 APC-H	7,125	40,802	34.06%	17.69%
CD3-CD4-	6	2,044	41.34%	CD3 FITC-H	CD4 APC-H	481	5,402	45.91%	22.28%
CD3+CD4-	7	1,233	24.94%	CD3 FITC-H	CD4 APC-H	6,113	5,240	38.80%	24.66%

Step 3. Statistics

- a. To edit statistics, click the button on the lower right corner of a plot to expand the plot and display the statistics chart first.



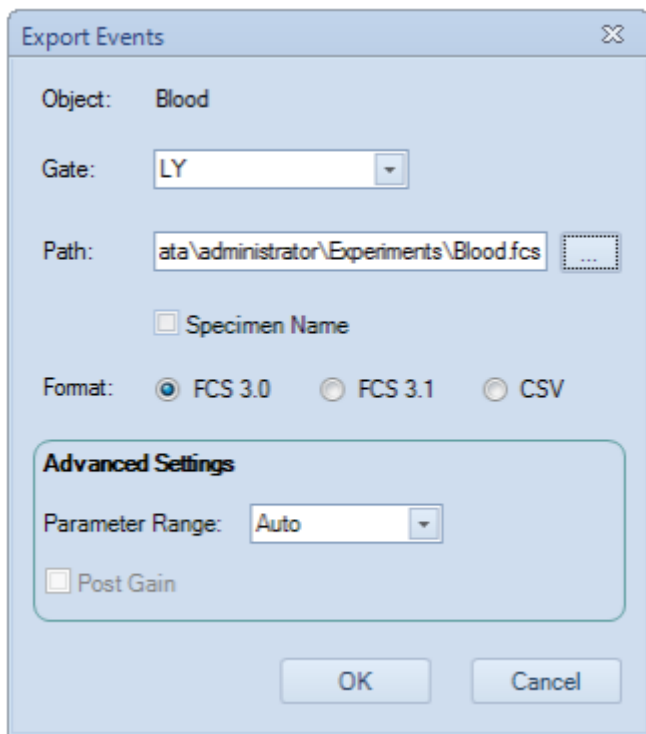
- b. Right-click within the chart*** and select the parameters to hide or display.



5. Data Export

Step 1. Export FCS file

- a. Select the sample, specimen, group, or experiment file node with data to be exported in the Experiment Manager Panel. **Right-click** the node and select **Export** → **Export to FCS Files ...**. The Export Events window will open.

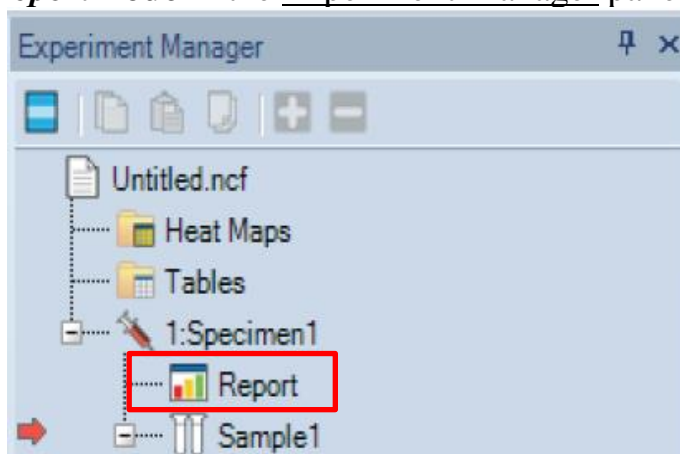


- b. Choose “All” for the *Gate* option. Click “...” button next to entry box of *Path*. Select your saving destination in Experiment Data Drive (F:/) **Experiment Data (D:)> user > Department> Your NAME**

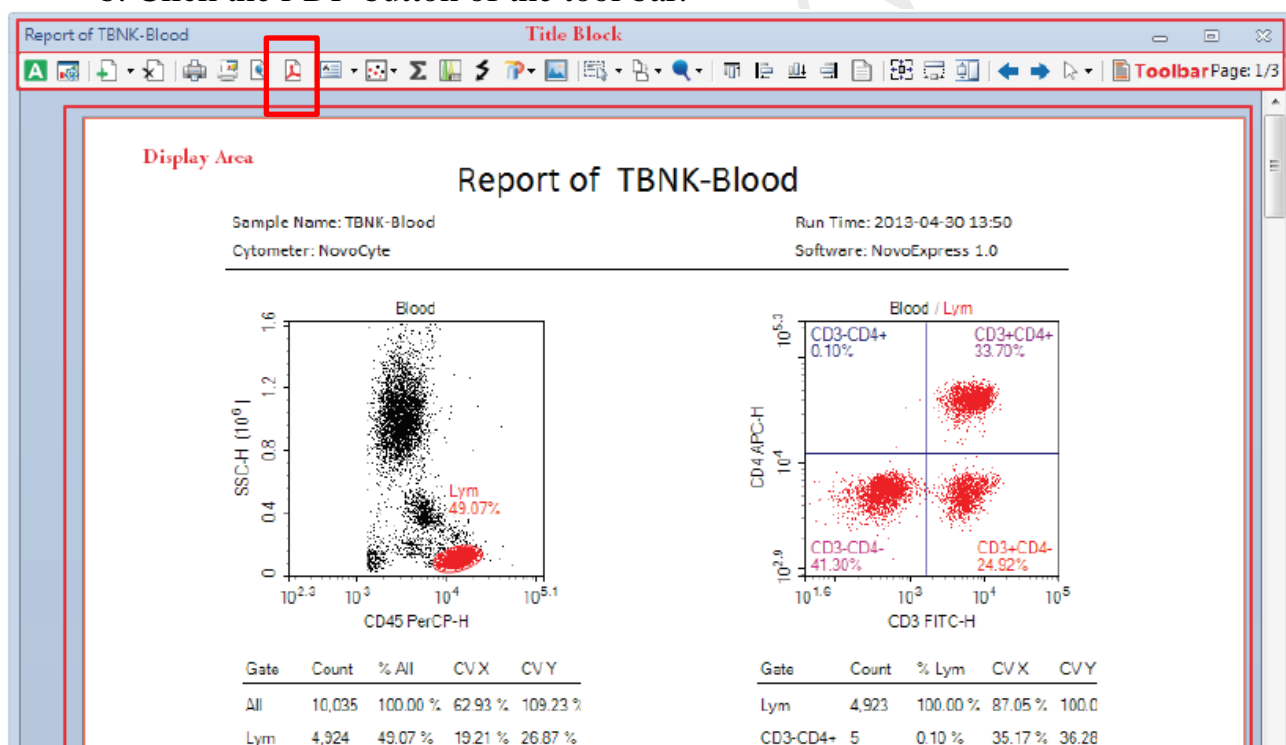
Select “FSC3.0” for Format and Click *OK*.

Step 2. Export PDF file (optional)


- a. To Export Plots and Statistics to a PDF, **double-click the Report node** in the Experiment Manager panel and Report Window will popup.



- b. Click the *PDF* button of the tool bar.

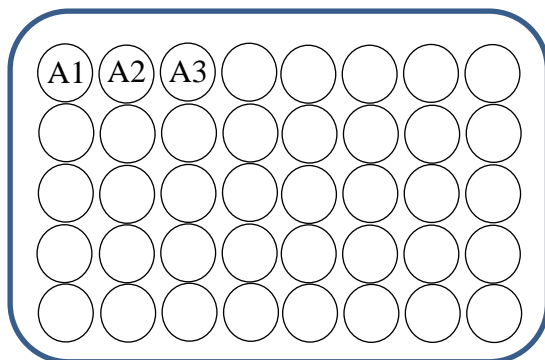


Select your saving destination in Experiment Data Drive (D:/)
D:/user/Your department/Your NAME

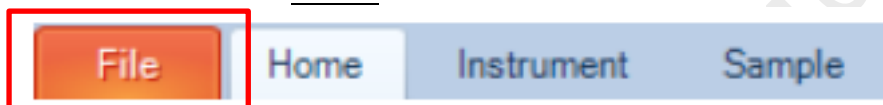
- c. Click *Save*  buttons on the top left-hand corner of the window when you finish your experiment

6. System Cleaning (You may use the “0cleaning” account to perform)

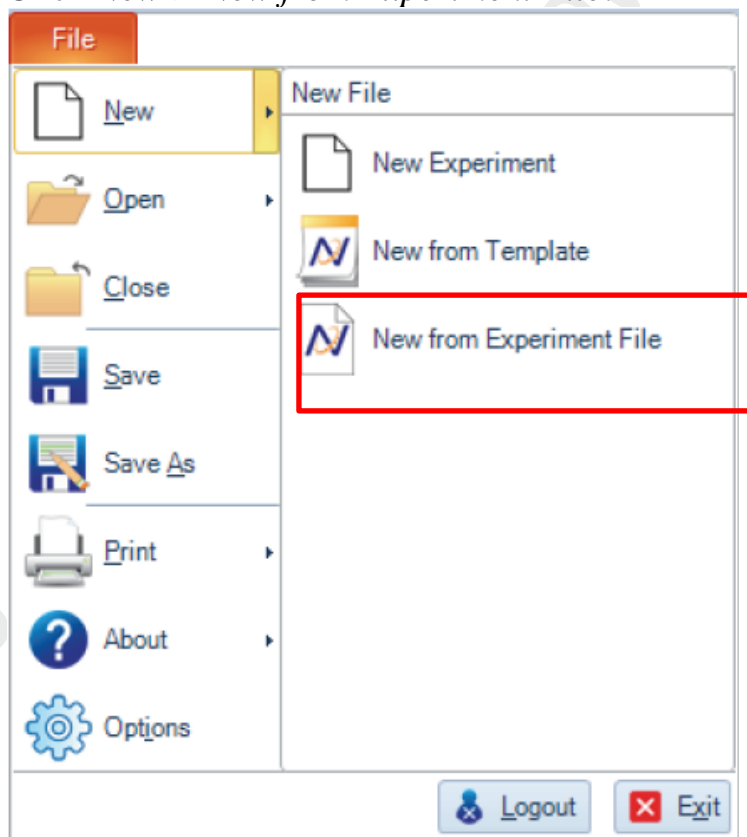
- a. Place tubes of at least 1ml of cleaning solution 1, 2 and 3 and put them in A1-A3 of the 40-tube rack respectively.



- b. Click *File* on the Menu bar.

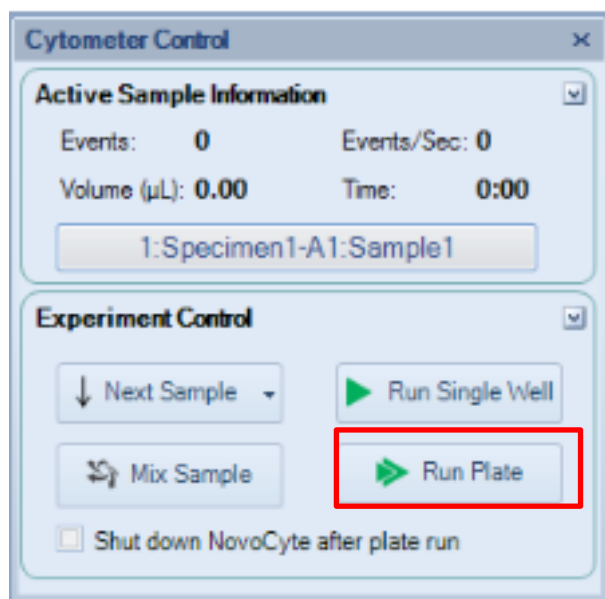


- c. Click *New* > *New from Experiment File*.



- d. Select *Desktop* > *cleaning.ncf* . Then click *OK*

e. Click *Run Plate* on the Cytometer Control Panel.

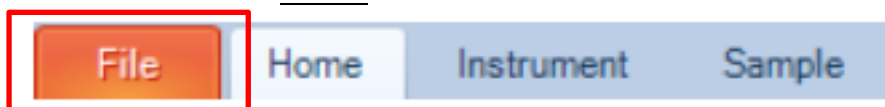


f. Select all wells. Then click *Run*. (Click *OK* to continue).

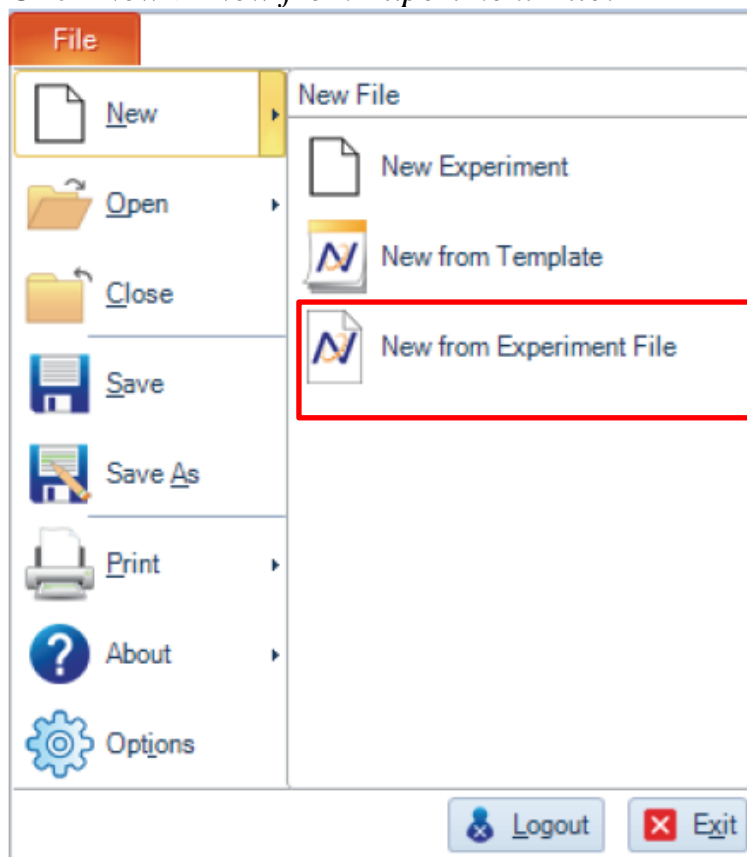
g. Select *Desktop > cleaning.ncf*. Click *Save* and *Yes* to overwrite.

7. Re-use Experiment as template

a. Click *File* on the Menu bar.



b. Click *New > New from Experiment File*.

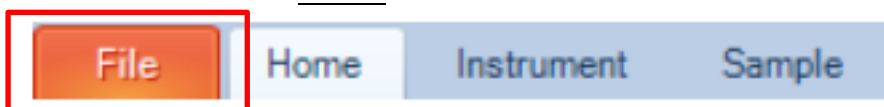


c. Select your target experiement file (.ncf) . Then click *OK*

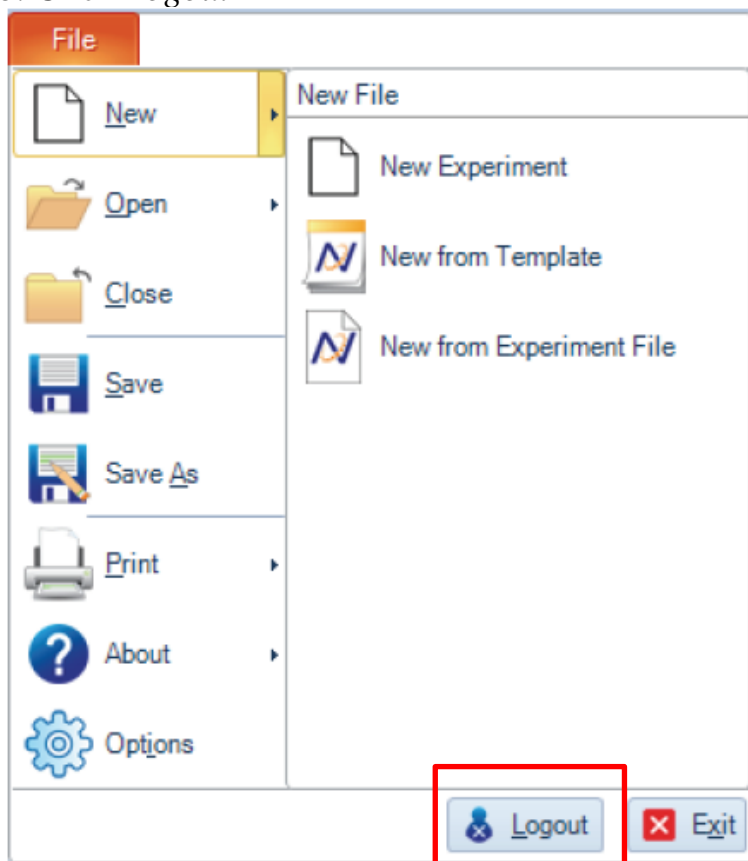
d. Click *File> Save As* to save the new experiment.

8. NovoExpress Software Log out

a. Click *File* on the Menu bar.



b. Click *Logout*



APPENDIX

Minimum Sample Volume Requirements for the NovoSampler Q is shown in table 3-1 below

Parameter	Plate Type	Standard Mode/HT Mode	Custom Mode	
			With Absolute Count Checked	With Absolute Count Unchecked
Minimum Sample Volume (µL)	12 × 75 mm tube (with ACEA 40 tube rack)	20.5	40.5	20.5
	24-well plates	285	305	285
	48-well plates	110	130	110
	96-well plates (flat-bottom)	41.5	61.5	41.5
	96-well plates (V-bottom)	15.6	35.6	15.6
	96-well plates (U-bottom)	15	35	15
	384-well plates	18	38	18

Table 3-1 Minimum Sample Volume Requirement for Each Plate and Tube Type



The recommended sample concentration range is 1×10^6 to 5×10^6 cells/mL.