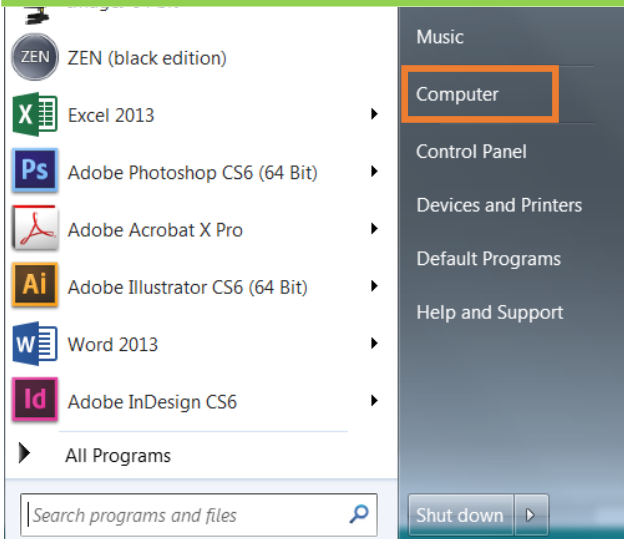


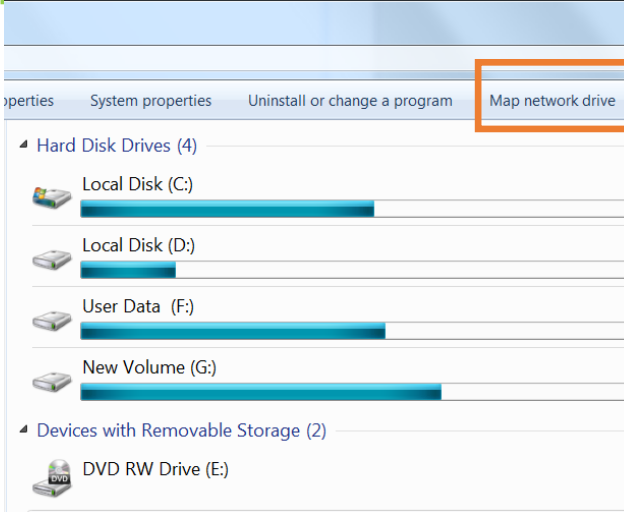
CPOS IFC Server Connection and Data Export (Windows 7)

Standard Operation Protocol

1 Click **Computer**

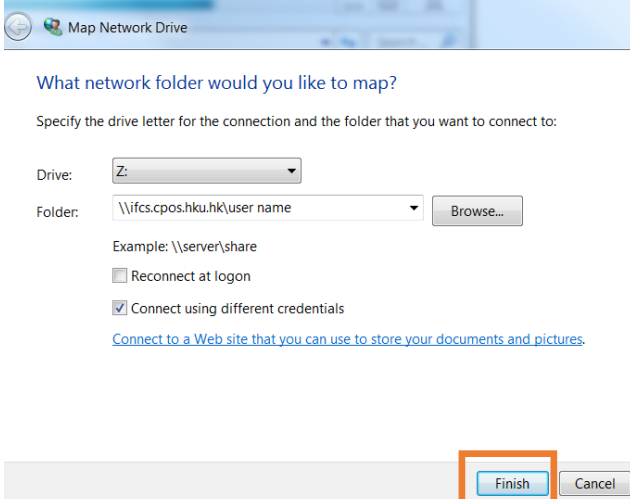


2 Click **Map network drive**

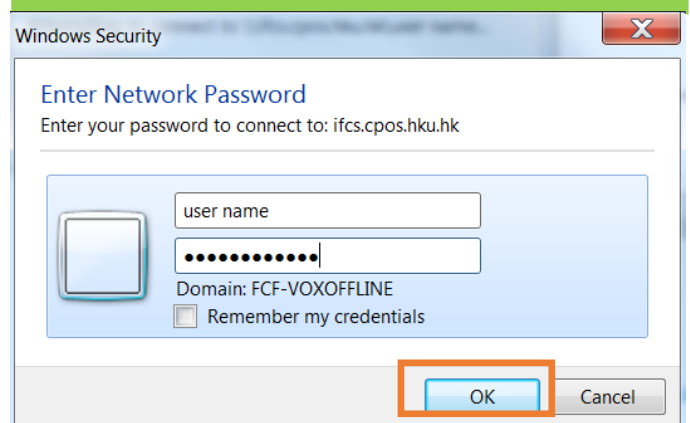


3 Type **\\ifcs.cpos.hku.hk\ user name**

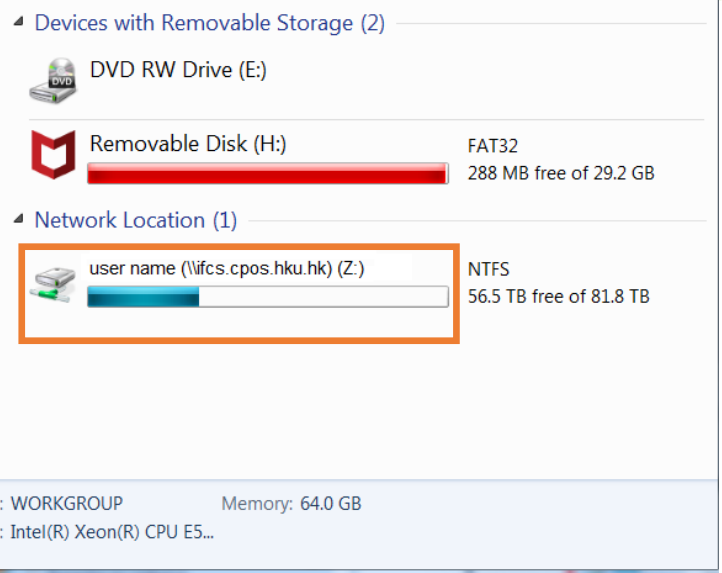
→ **✓** Check **Connect using...** → **Finish**



4 Enter **User name & Password** → **OK**



1. A **network drive** is mapped to the computer
2. Transfer your data from D drive to the Network drive : **Copy** → **Paste**



- 6 Right Click **network drive** at my Computer
→ **Disconnect** Network drive

