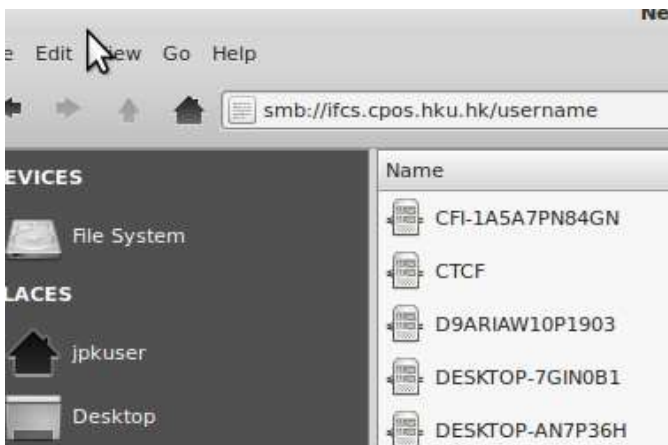


### CPOS IFC Server Connection and Data Export (Linux)

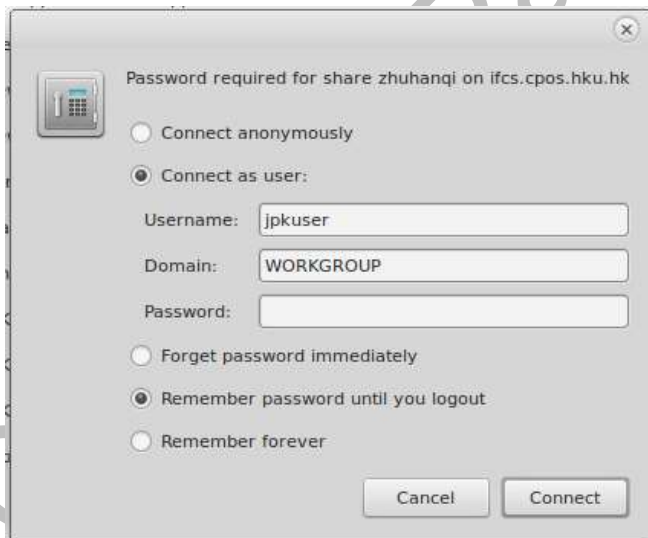
1. Click IP setting on the desktop



2. Type `smb://ifcs.cpos.hku.hk/username`, then Enter



3. Enter User name and Password, and click **Connect**



4. A network drive is mapped to the computer. Transfer your data from computer to the Network drive: copy → Paste

5. Right click network drive and disconnect